



M J ASSOCIATES

PROJECT ENGINEERING CONSULTANTS

COMPANY PROFILE



INTRODUCTION

MJ ASSOCIATES, a Design Consultancy Organization was registered in 1993 to fulfil the need for a detailed design engineering company to cater mainly to the needs of pharmaceutical sector and continuous food processing plants the promoters were with a long background of working in well established pharmaceutical companies with vast experience in executing green field projects, carrying out internal expansion programs, operation of utility equipment and plant maintenance activities. During their service at Bangalore plant of Cipla Ltd., They have worked extensively on machinery and projects for extraction of Senna leaves and pods, dioscorea roots, vinca leaves for extraction of anticancer drugs etc.,

In its 27 years of its existence, the Organization successfully completed and handed over more than 160 projects mainly:

- ✓ Pharmaceuticals, biotech and R&D labs
- ✓ Bulk drugs, drug intermediates and speciality chemicals
- ✓ Food processing & packaging plants
- ✓ Specialized clean rooms for other applications



Name: A.K.MURTHY

Qualification: Marine Engineer, Calcutta

First Class Engineer – Ministry of Transport

Chartered Engineer – Member – Institution of Engineering (India).

PROFILE OF KEY PERSONNEL – M/s. M.J.ASSOCIATES

Professional Experience

- Over ten years of experience as Marine Engineer on Foreign going ships involved in operation and maintenance of shipboard machinery with certificate of competency of first class (Diesel) issued by Ministry of Transport.
- Over fifteen years of experience as Chief Engineer in leading Pharmaceutical companies like Warner Hindustan Ltd and Cipla Ltd, in-charge of all Engineering activities comprising plant maintenance, operation of utilities and project execution.
- Project Engineer involved in the setting up of two major Green Field projects for manufacture of both API's and finished formulations at Patalganga and Kurkumbh.
- Over twenty five years of experience with M.J.Associates as consultant partner involved in the concept and detailing of drug intermediate and finished API plants and finished formulation plants for manufacture of solid dosage forms, semi-solids, liquid orals and parenterals of which many have been approved by USFDA, UKMHRA etc., and R&D labs for product development.
- As part of senior management team in Cipla Ltd involved in liaison work with Governmental agencies such as Department of Factories, Karnataka Industrial Area Development Board, Boiler Inspectorate, Department of Industries etc.,



Name: S. JANARDHAN
Qualification: B.E. (Mechanical) Mysore University



PROFILE OF KEY PERSONNEL – M/s. M.J.ASSOCIATES

Professional Experience

- Over eight years of experience in project execution in green field and brown field projects in Cipla Ltd.
- Hands on experience in handling site related issues relating to operation and maintenance of equipment relating to production and utilities in a large API plant at Cipla Ltd., Bangalore.
- Over two decades of experience with M. J. Associates as Consultant Partner involved in concept, basic and detailed engineering designs for API plants, Speciality chemical plants, finished formulations, food and confectionery and R&D labs.
- Varied experience in understanding client's requirements for the project and providing economical solutions with respect to design of plant layouts, selection of plant and equipment and concept and detailed engineering design.
- Providing efficient concept and detailed designs for MEP services such as utility and process piping, HVAC and clean room designs, electrical system distribution design, fire and safety control designs and coordination and interaction with architects and structural consultants for efficient execution of project.
- Strong experience in handling site related issues with contractors in interpreting drawings and deliverables to facilitate speedy execution of projects with tight control on budgetary cost and working within project time frames set.
- Expertise in plant commissioning and project closures to meet or exceed client's requirements.



Name: Sundar D.B
Qualification: B.E. (Mechanical) Bangalore University
M. S (T.O) – B.I.T.S Pilani, Rajasthan.
M.B.A - B.I.T.S Pilani, Rajasthan.



PROFILE OF KEY PERSONNEL – M/s. M.J.ASSOCIATES

Professional Experience

- Over Twenty-six years of experience in Engineering services, Design and Project implementation.
- Started career and worked in the maintenance of a leading Pharmaceutical and API company and has hands on experience and a strong base in the design and installation of the facility services like HVAC, Piping, Electrical and LV systems.
- Worked in leading Air conditioning company M/s. Voltas Ltd and in the middle east and is having a strong international exposure in HVAC related field.
- Providing efficient concept and detailed designs for MEP services such as utility and process piping, HVAC and clean room designs, electrical system distribution design, fire and safety control designs and coordination and interaction with architects and structural consultants for efficient execution of project for both Green Field and Brown Field Projects related to Formulation, API and R&D projects.
- Have strong experience in handling site related issues with contractors especially in interpreting drawings and deliverables to ensure speedy execution of projects and provide tight control on budgetary cost to work within project time frames established.
- Have considerable experience and expertise in plant commissioning and project closures especially with respect to clean room design and validation to meet or exceed client's requirements.

Bulk Drugs

- ❖ API, Drug Intermediates & Specialty Chemicals manufacturing
- ❖ HPAPI and Biotech products
- ❖ Pilot Plant & Kilo – Lab Design & Execution
- ❖ Herbal Extracts Plant

Formulations

- ❖ Oral Solid Dosage forms
- ❖ Liquids Orals
- ❖ Derma-care - Ointments and creams
- ❖ Soft Gel filling
- ❖ Injectables & Dry Powder Parenterals
- ❖ Bio-Pharma products

Research & Development & Quality Control

- ❖ Process Development Lab
- ❖ Biotech and Bio-Analytical Lab
- ❖ Institutional and Pure Science Labs
- ❖ HPAPI Labs
- ❖ Quality Control and Microbiology labs
- ❖ Formulation development Labs

INDUSTRIES SERVED

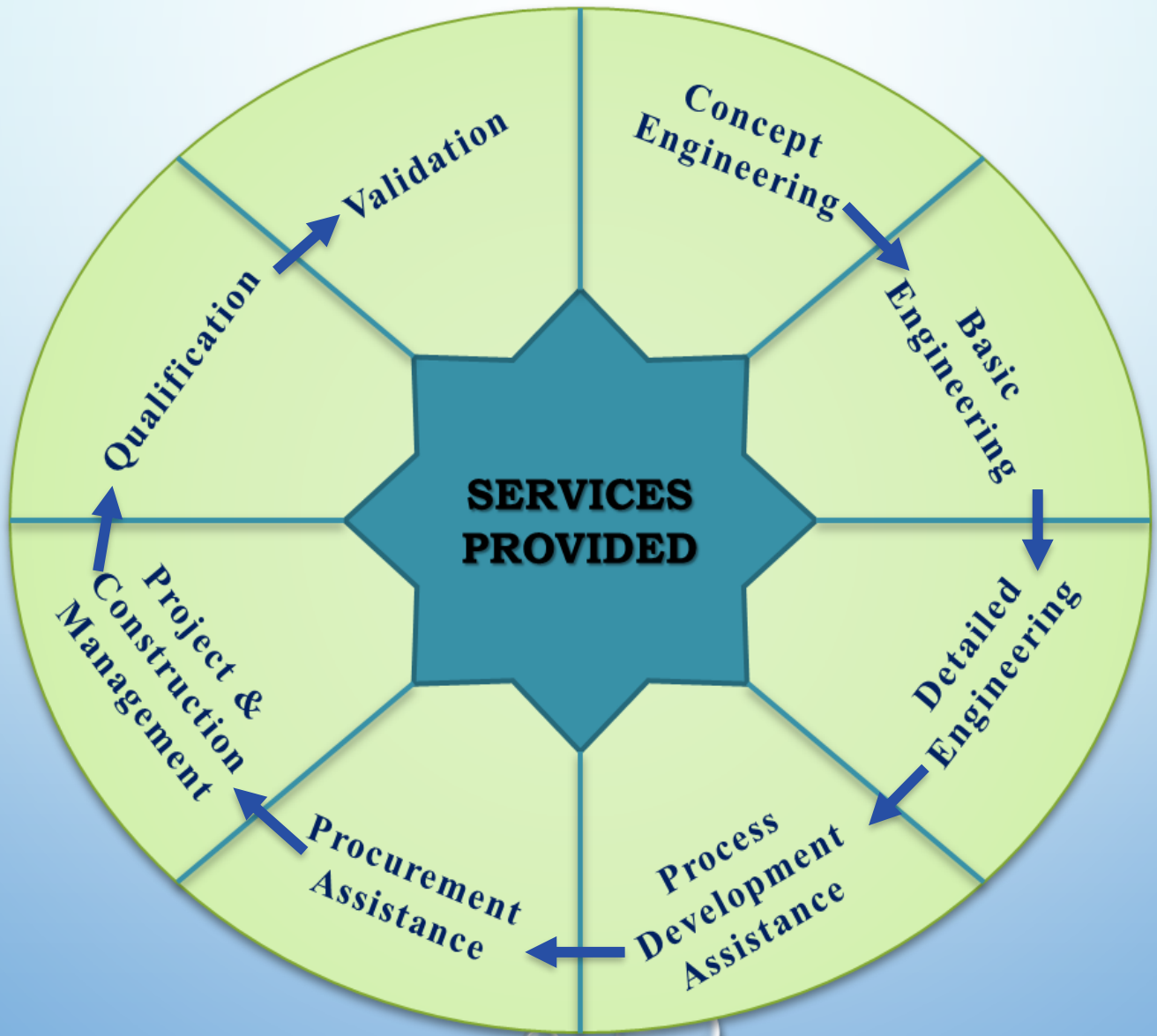
Cosmetics

- ❖ Creams, Lotions and Shampoos
- ❖ Skin Care Products
- ❖ Toothpaste, mouthwash and oral care products

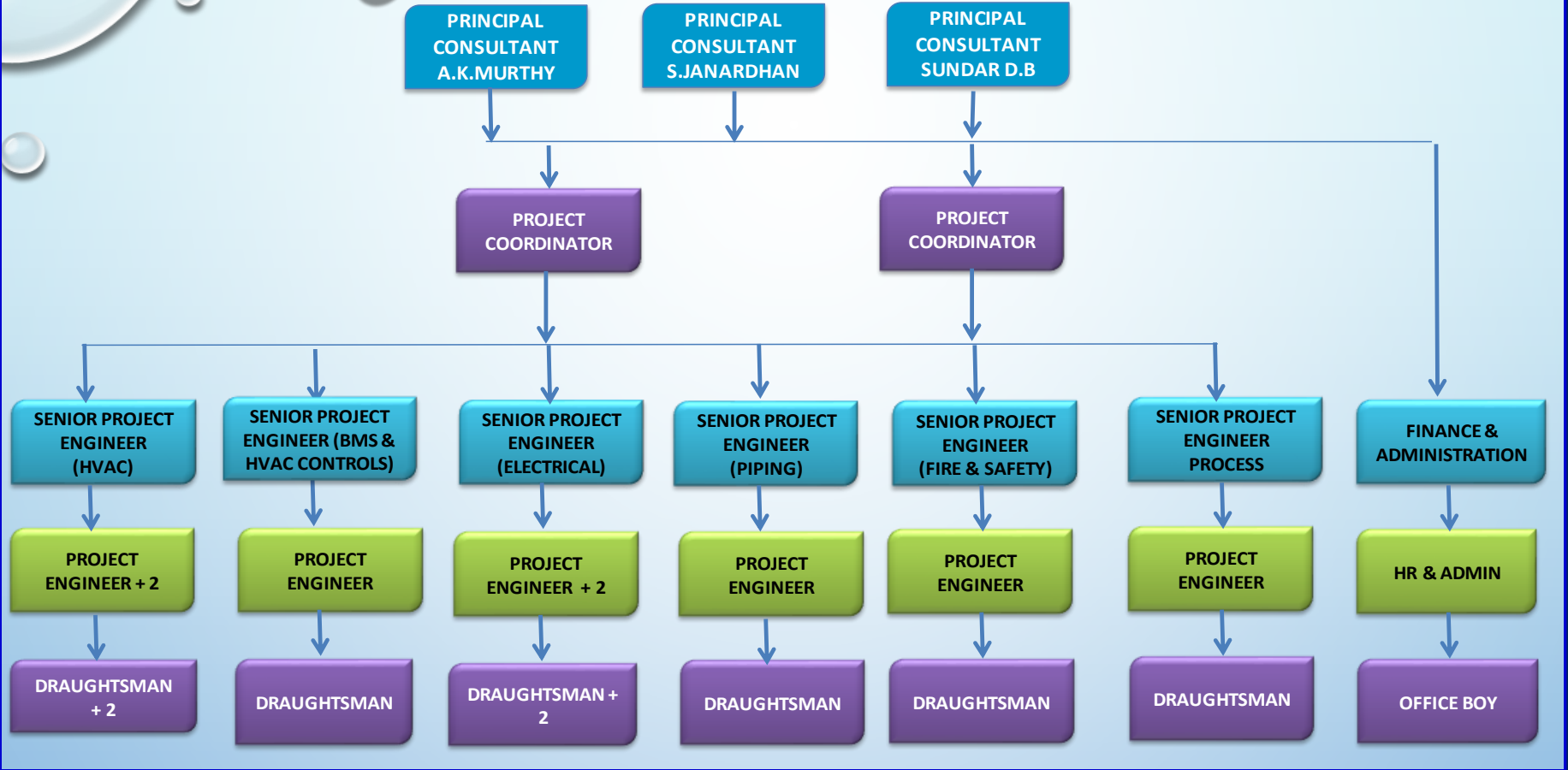
Nutraceuticals supplements and Confectionery

- ❖ Protein and Vitamin supplement plants
- ❖ Chewing gum manufacturing and packing plants
- ❖ Candy and lozenges plant

SERVICES PROVIDED



ORGANISATIONAL CHART



FACILITIES AVAILABLE

NOTE ON INFRASTRUCTURE

Office space available - 1500 Sq. Ft.

- DESKTOP COMPUTERS
- LAPTOPS
- AUTO CAD SOFTWARE PACKAGE
- PIPING DESIGN SOFTWARE PACKAGE
- MAIL SERVER
- CENTRALIZED SERVER WITH FIREWALL
- STAND BY UPS
- CONFERENCE ROOM
- PROJECTOR

FORMULATION PROJECTS



CLIENT LIST	Project cost (Crores)
M/s. ALEOR DERMACEUTICALS LTD (A DIVISION OF ALEMBIC PHARMACEUTICALS LIMITED. - 390000 SQ FT.	170.00
M/s. AUROBINDO PHARMA LTD – SEZ – 150000 SQ FT	120.00
M/s. BIOKEM INTERNATIONAL LTD. (KEMWELL GROUP)	100.00
M/s. OPTIMUS GENERICS PRIVATE LTD – 50000 SQ FT	60.00
M/s. REXAM PHARMA PACKAGING INDIA PVT. LTD. – PHASE I,II, III – 100000 SQ FT	60.00
M/s. JUGGAT PHARMA. – 50000 SQ FT	50.00
M/s. ENCUBE ETHICALS LTD. – GOA	50.00
M/s. KEMWELL LTD.	50.00
M/s. BRS LIFESCIENCES PRIVATE LIMITED	50.00
M/s. FOURRTS (INDIA) LABORATORIES PVT. LTD. – 20000 SQ FT	40.00
M/s. MYLAN LABORATORIES LIMITED - STERILE PRODUCT DIVISION	40.00
M/s. STRIDES PHARMA MOZAMBIQUE LTD	35.00
M/s. ALDER BIOCHEM PRIVATE LIMITED	30.00
M/s. GLOCHEM INDUSTRIES LTD.	30.00
M/s. TENSHI LIFE SCIENCES PVT LTD	28.00
M/s. SREE ANAND LIFESCIENCES	25.00
M/s STRIDES EMERGING MARKETS PRIVATE LTD.,	25.00
M/s. ENCUBE ETHICALS PVT LTD	20.00

FORMULATION PROJECTS



CLIENT LIST	Project cost (Crores)
M/s. BHARAT BIOTECH LTD. – HYDERABAD	20.00
M/s. BROWN & BURK PHARMACEUTICALS LTD. (MICRO LABS GROUP)	20.00
M/s. BRITISH BIOLOGICALS	20.00
M/s. ANGLO FRENCH	20.00
M/s. MYLAN LABORATORIES LIMITED – WAREHOUSE	20.00
M/s. MEDISTICS GLOBAL PRIVATE LIMITED	20.00
M/s. PSK PHARMA LTD., DUBNA, RUSSIA	20.00
M/s. BIOCON LIMITED (UTILITY UPGRADATION)	15.00
M/s GROUP PHARMACEUTICALS LTD,	8.00
M/s. TWENTY FIRST CENTURY PHARMACEUTICALS LTD	
M/s. KARNATAKA ANTIBIOTICS & PHARMACEUTICALS LTD	
M/s. WRIGLEY PVT LTD., (PROCESS CONSULTANCY)	
M/s. WARNER LAMBERT LTD., (PROCESS CONSULTANCY)	
M/s. SRI KRISHNA PHARMACEUTICALS LTD.	
M/s. KEMWELL BIOPHARMA PVT. LTD.	
M/s. BPREX PHARMA PACKAGING INDIA PVT LTD	

M/S. ALEOR DERMACEUTICALS LTD
(A DIVISION OF ALEMBIC PHARMACEUTICALS LIMITED. - 390000 SQ FT.)



ENCUBE ETHICALS, GOA



M/S. SREE ANAND LIFESCIENCES



M/S. SREE ANAND LIFESCIENCES



M/S. BRS LIFESCIENCES PRIVATE LIMITED



M/S. TENSHI LIFE SCIENCES PVT LTD



M/S STRIDES EMERGING MARKETS PRIVATE LTD



M/S. JUGGAT PHARMA



M/S STRIDES PHARMA MOZAMBIQUE LTD



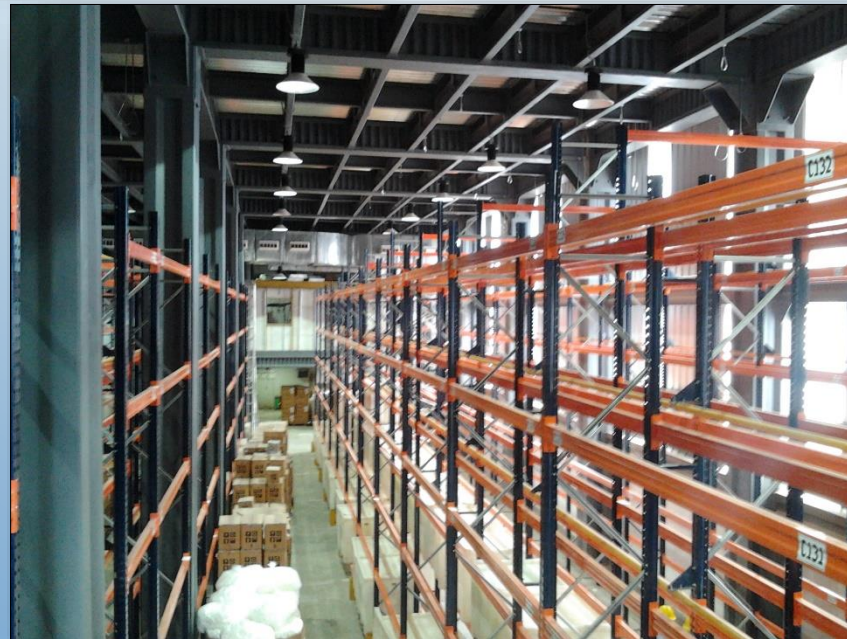
M/S INVITROGEN LTD.



M/S. KEMWELL LTD



M/S. REXAM PHARMA PACKAGING INDIA PVT. LTD.



M/S. SARVOTHAM CARE LTD



R&D PROJECTS



CLIENT LIST	Project cost (Crores)
M/S. JUBILANT BIOSYS LTD - JDDS FUTURE BANGALORE, DEVANAHALLI INDUSTRIAL AREA (PILOT PLANT, R&D CENTER FOR CHEMISTRY & BIOLOGY WITH ANIMAL HOUSE) – 380000 Sq ft.	300.00
M/S. SYNGENE INTERNATIONAL PVT LTD. (R&D AND STABILITY CHAMBER) – 300000 Sq ft.	200.00
M/S. MYLAN LABORATORIES LTD – 160000 sq ft	160.00
M/S. SYNGENE INTERNATIONAL PVT LTD - S2 BLOCK – 100000 sq ft	100.00
M/s APOTEX PHARMACHEM (I) PVT LTD – 90000 Sq ft	80.00
M/S. BECKMAN COULTER – 100000 Sq ft	50.00
M/S. CIPLA LTD – R&D	50.00
M/S. INDIAN INSTITUTE OF SCIENCE EDUCATION AND RESEARCH (PUNE & BHOPAL) – LAB INTERIORS 200000 SQ FT	50.00
M/S ANTHEM BIOSCIENCES INDIA LTD 100000 SQ FT	40.00
INDIAN INSTITUTE OF SCIENCE (BANGALORE) – CHEMISTRY BLOCK (LAB INTERIORS)	25.00
M/S. STELIS BIOPHARMA PVT LTD	20.00
M/S. MRPL	20.00
M/S. INBIOPRO SOLUTIONS PRIVATE LIMITED .(STELIS BIOPHARMA PVT LTD)	20.00
CENTRAL UNIVERSITY OF TAMIL NADU (lab interiors) – 40000 SQ FT	20.00

R&D PROJECTS



CLIENT LIST	Project cost (Crores)
M/s INVITROGEN LTD	10.00
VIENNI TRAINING & CONSULTING LLP	7.00
M/s. TICEL BIOTECH LTD	7.00
M/s. HEALTHCARE GLOBAL ENTERPRISES LIMITED (HCG)	6.00
M/s. FMC INDIA PVT. LTD	5.00
M/s. ADVINUS THERAPEUTICS LIMITED	4.00
M/s. MILLIPORE (INDIA) PVT. LTD	3.00
M/s. KEMWELL BIOPHARMA PVT. LTD.	
ASHOKA UNIVERSITY	
M/S. JUBILANT BIOSYS - YESHWANTPUR	
PERFORMANCE SPECIALTY PRODUCTS (INDIA) PRIVATE LIMITED (DUPONT, HYDERABAD)	
M/s. L'OREAL	
M/s. COOKSON INDIA LTD	
M/s. SOCIETY FOR INNOVATION & DEVELOPMENT - INDIAN INSTITUTE OF SCIENCE, BANGALORE	
ITC INFOTECH LTD	
M/s. TOTAL OIL INDIA PRIVATE LIMITED, NAVI MUMBAI	
M/s. BAKER HUGHES	
M/s. APOTEX RESEARCH PRIVATE LTD	

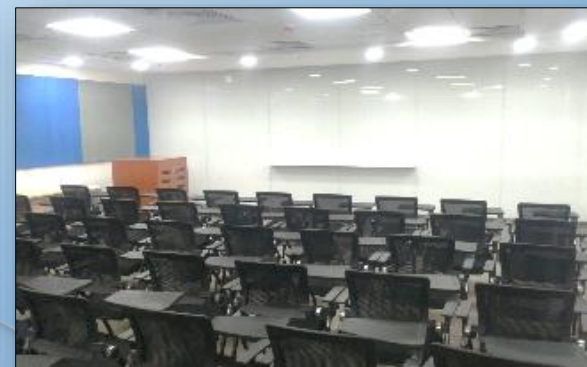
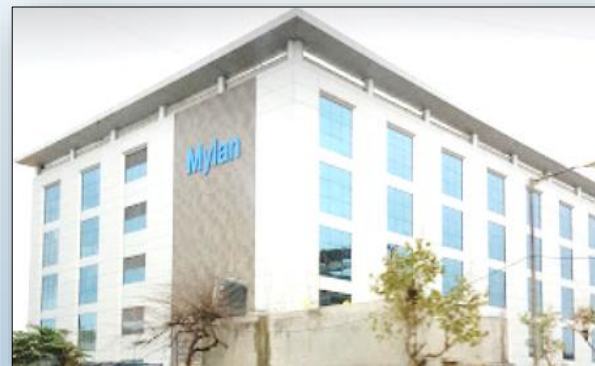
R&D PROJECTS



Sl No. **Dr. REDDYS LABORATORIES LTD - PROJECT COST – RS. 120.00 CRORES (180000 Sq. ft)**

- 1 IPDO – BANGALORE : RESEARCH & DEVELOPMENT FACILITY TO MEET CURRENT GLP & SAFETY REQUIREMENTS
- 2 FTO – 2 HYDERABAD : UPGRADATION OF EXISTING QUALITY CONTROL & STABILITY LABS (HI POTENT LAB).
- 3 CTO2 QC MODIFICATION AT BOLLARAM
- 4 VALIDATION & METHODOLOGY CELL – VIZAG
- 5 CTO - 1 MICROBIOLOGY LAB AT BOLLARAM
- 6 CTO - MICROBIOLOGY LAB AT VIZAG
- 7 MICROBIOLOGY LAB AT JEEDIMETLA
- 8 FTO UNIT - 2 - QUALITY CONTROL LAB AND STABILITY CELL RENOVATION DESIGN AT BACHUPALLY
- 9 FF-CHEM SPEED LAB 21 AT IPDO HYDERABAD
- 10 CTO - 4 - QUALITY CONTROL LAB RELOCATION AT JEEDIMETLA
- 11 FTO - 2 IPDO HI-POTENT PARENTAL LAB AT BACHUPALLY
- 12 CTO UNIT - 1 QC & MICROBIOLOGY LAB EXPANSION AT BOLLARAM
- 13 CTO UNIT – 1 AT VIZAG (PROJECT IN PROGRESS)
- 14 HYDROGENATION LAB AT FTDC (PROJECT IN PROGRESS)
- 15 GMP KILO POTENT LAB AT CPS UNIT-2, JEEDIMETLA (PROJECT IN PROGRESS)
- 16 NON-POTENT AND NON GMP KILO LAB AT IPDO (PROJECT IN PROGRESS)

M/S. MYLAN LABORATORIES LTD - R&D PHASE - I





M/S. BECKMAN COULTER



M/S. SYNGENE INTERNATIONAL PVT LTD - S2 BLOCK





M/S. INDIAN INSTITUTE OF SCIENCE EDUCATION AND RESEARCH (PUNE)



DR. REDDY'S - PROCESS & ANALYTICAL LABS AT IPDO





M/S MILLIPORE (INDIA) PVT. LTD



HEALTHCARE GLOBAL ENTERPRISES LIMITED (HCG)



CENTRAL UNIVERSITY OF TAMIL NADU



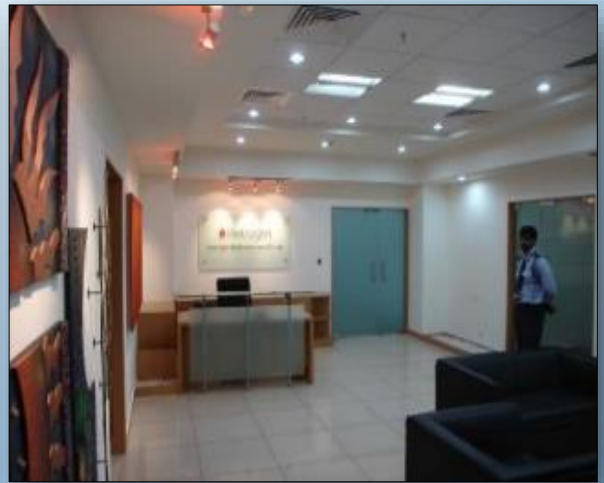
TOTAL OIL INDIA PRIVATE LIMITED,



M/S APOTEX PHARMACHEM (I) PVT LTD



M/S INVITROGEN LTD.



M/S ANTHEM BIOSCIENCES INDIA LTD



M/s. STELIS BIOPHARMA PVT LTD



M/s. INBIOPRO SOLUTIONS PRIVATE LIMITED



BAYER HIMMATNAGAR



M/s. COOKSON INDIA LTD



M/s. ADVINUS THERAPEUTICS LIMITED



API PROJECTS



CLIENT LIST	Project cost (Crores)
M/s BIOCON INDIA LTD. API	120.00
M/s. SYNGENE INTERNATIONAL LTD	80.00
M/s. CDYMAX (INDIA) PHARMA PVT. LTD. (ACEBRIGHT (INDIA) PHARMA PVT. LTD)-	80.00
M/s. GLAND PHARMA – API	60.00
M/s. SEQUENT SCIENTIFIC - MANGALORE.	50.00
M/s. CIPLA LTD – BANGALORE	50.00
M/s APOTEX PHARMACHEM (I) PVT. LTD. API PLANT	50.00
M/s. SQUARE PLUS LIFE SCIENCES PVT LTD..	30.00
M/s HIKAL LTD.	30.00
M/s. PT SEA SIX ENERGY INDONESIA	20.00
M/s. ASHIRVAD PIPES PVT LTD	16.00
M/s BIO-GEN EXTRACTS PVT. LTD.	12.00
M/s. INDENA INDIA PVT LTD.	10.00
M/s. MILLTEC MACHINERY PRIVATE LIMITED	10.00
M/s. AGILA SPECIALTIES PVT LTD - WAREHOUSE	7.00
M/s. TOJO VIKAS BIOTECH PRIVATE LIMITED	

BIOCON, FERMENTATION BLOCK



M/S. SYNGENE INTERNATIONAL LTD



M/S BIO-GEN EXTRACTS PVT. LTD



M/S. APOTEX PHARMACHEM INDIA PVT LTD – API PLANT



M/S. APOTEX PHARMACHEM INDIA PVT LTD – API PLANT



M/S. ASHIRVAD PIPES PVT LTD



M/S HIKAL LTD



SOME OF OUR MAJOR CLIENTS



SOME OF OUR MAJOR CLIENTS





Thank you for your attention.

For More information:

www.mjassociates.in

projects@mjassociates.in

ADDRESS

**# 45, 1ST FLOOR, 5TH CROSS,
8TH MAIN ROAD, VASANTHANAGAR,
BANGALORE - 560052.**

Ph: +91 080 22204636 / 22284583

Email: projects@mjassociates.in

Website: www.mjassociates.in